



Hymarque
Constructions

Where life takes shape

PREMIUM VILLA PLOTS @ TUKKUGUDA



RERA No.: P02400009215
Layout Permit No.: 000069/LO/Plg/HMDA/2024

MARKETING PARTNER



ANUSHREE
INFRA
A Special Privileges
www.anushreeinfra.in



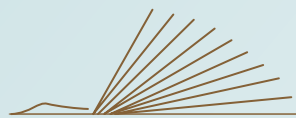
Where the beautiful life you have dreamed of living starts to take shape

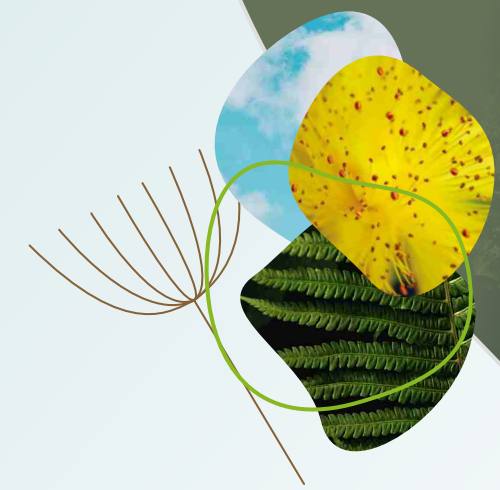
Imagine a community designed to connect people and places, where open green spaces and thoughtfully planned neighborhoods create harmony. A place where every detail inspires a sense of belonging, and every corner invites a moment of joy. Here, life's beauty unfolds naturally, offering a perfect blend of serenity and togetherness. It's where your dreams of a beautiful, connected life start to take shape.

Jet County by Hymarque Constructions
Build your dream home in a community designed for harmony.



wonderful future awaits you at



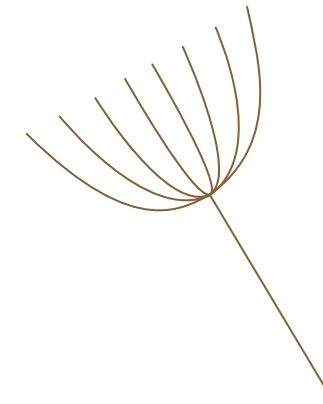


A Mini Hamlet of Thoughtfully Designed Living

Jet County is an exclusive HMDA-approved villa plot community with easy access through the Tukkuguda exit, connecting directly to the Srisaïlam Highway and providing a smooth link to Maheswaram. Spread across 22 acres, this community offers the perfect blend of convenience and nature. Thoughtfully planned flat land plots allow you to build your dream home with ease.

Experience a vibrant, green future where modern living meets tranquility and harmony.





Build Where Dreams Begin

Step into a world crafted for your dreams, where international-standard infrastructure meets vibrant, growing communities.

With all permissions in place, your dream home is just a step away. Experience the luxury of open spaces, breathe in life's freshness, and embrace a healthy start every day—where comfort and nature live in perfect harmony.



Explore community site map

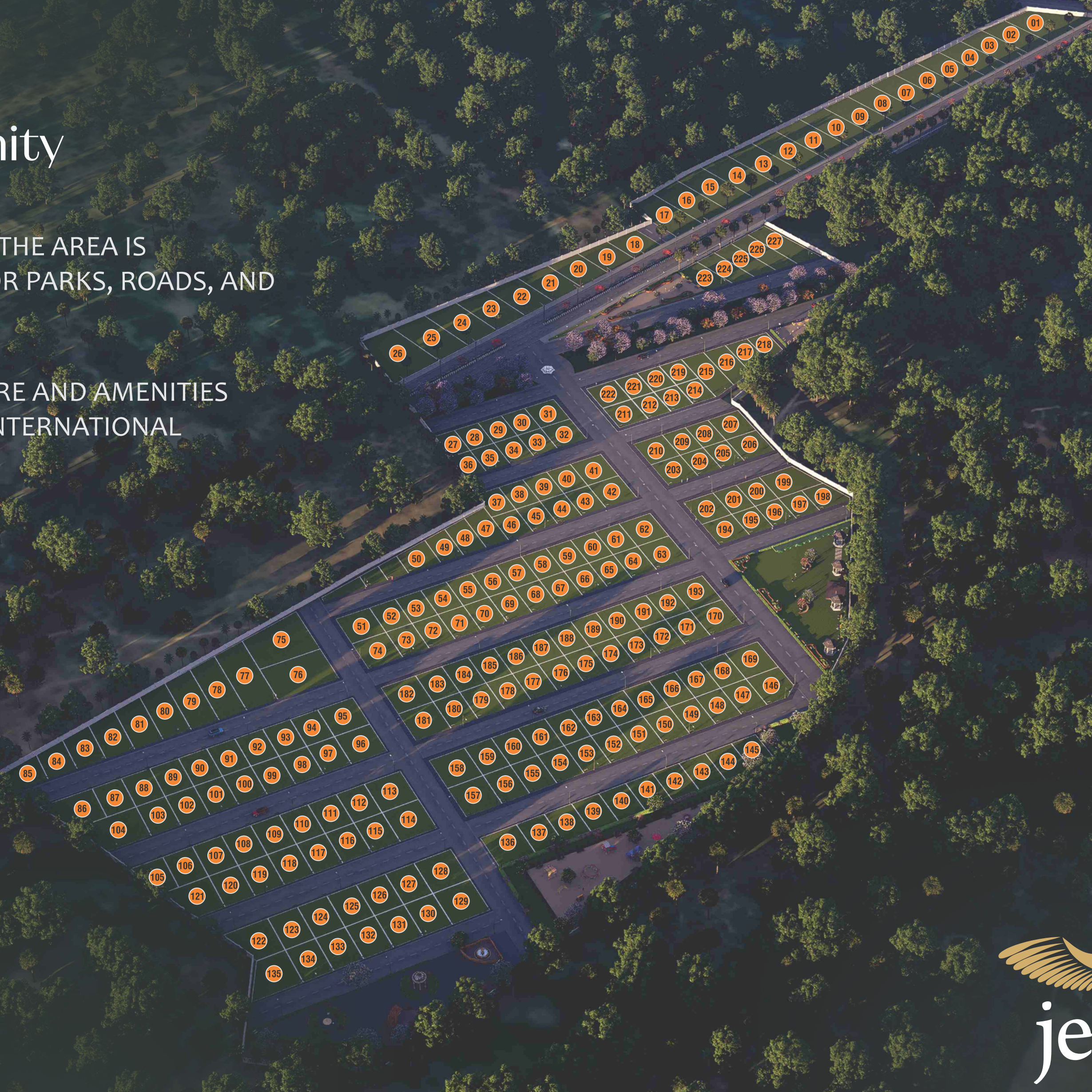
50 PERCENT OF THE AREA IS EARMARKED FOR PARKS, ROADS, AND AMENITIES

INFRASTRUCTURE AND AMENITIES CONFORM TO INTERNATIONAL STANDARDS



RERA NO: P02400009215

Layout Permit No. 000069/LO/Plg/HMDA/2024



AREA STATEMENT (in Sq. Yds)

PLOT NO	AREAS	FACING
1	820	WEST
2	524	WEST
3	536	WEST
4	531	WEST
5	536	WEST
6	545	WEST
7	552	WEST
8	559	WEST
9	566	WEST
10	573	WEST
11	580	WEST
12	586	WEST
13	591	WEST
14	594	WEST
15	595	WEST
16	582	WEST
17	560	WEST
18	301	WEST
19	333	WEST
20	365	WEST
21	397	WEST
22	429	WEST
23	461	WEST

PLOT NO	AREAS	FACING
24	492	WEST
25	524	WEST
26	728	WEST
27	173	EAST
28-30	184	EAST
31	250	EAST
32	250	WEST
33-35	183	WEST
36	171	WEST
37	177	EAST
38-40	183	EAST
41	250	EAST
42	250	WEST
43-46	183	WEST
47	230	WEST
48	205	WEST
49	180	WEST
50	212	WEST
51	250	EAST
52-61	183	EAST
62	250	EAST
63	250	WEST
64-73	183	WEST

PLOT NO	AREAS	FACING
74	250	WEST
75	580	SOUTH
76	512	WEST
77	466	WEST
78	378	WEST
79	348	WEST
80	319	WEST
81	289	WEST
82	259	WEST
83	229	WEST
84	200	WEST
85	379	WEST
86	294	EAST
87-94	183	EAST
95	250	EAST
96	250	WEST
97-103	183	WEST
104	346	WEST
105	172	EAST
106-112	183	EAST
113	250	EAST
114	250	WEST
115-120	183	WEST

PLOT NO	AREAS	FACING
121	249	WEST
122	248	EAST
123-127	183	EAST
128	250	EAST
129	250	WEST
130-134	183	WEST
135	259	WEST
136	250	EAST
137-145	183	EAST
146	236	WEST
147-156	183	WEST
157	250	WEST
158	250	EAST
159-168	183	EAST
169	250	EAST
170	250	WEST
171-180	183	WEST
181	250	WEST
182	250	EAST
183-192	183	EAST
193	250	EAST
194	233	WEST
195-197	171	WEST

PLOT NO	AREAS	FACING
198	214	WEST
199	317	EAST
200, 201	183	EAST
202	250	EAST
203	250	WEST
204, 205	183	WEST
206	255	WEST
207	256	EAST
208, 209	183	EAST
210	250	EAST
211	250	WEST
212-214	183	WEST
215	346	EAST
216	298	EAST
217	251	EAST
218	204	EAST
219-221	182	EAST
222	250	EAST
223	287	WEST
224	296	WEST
225	328	WEST
226	360	WEST
227	468	WEST



Exceeding Expectations in Community Design

Where thoughtful planning and luxury living meet, creating a space beyond your dream



Infrastructure

Relax, unwind, or get active amidst a breathtaking green backdrop. Over 50% of Hymarque's Jet County is dedicated to open spaces, featuring conservation bushland, regional parks, sporting fields, and serene wetlands.



Community

Be part of something greater—a community where bonds grow naturally. A place where friendships are formed, and neighbors care and connect.

Discover 22 Acres of Gated Serenity

Welcome to a thoughtfully designed gated community offering premium plots with:

- **Grand Entrance Arch** for a majestic welcome.
- **100% Clear Title & Vaasthu** - compliant plots for peace of mind.
- **Wide 60, 40 & 33 Feet Cement Roads** for seamless connectivity.
- Reliable underground water tank sump with a pneumatic motor.
- Picturesque Landscaped Gardens and lush Avenue Plantation.
- **24/7 Security** with a sturdy Compound Wall for safety.
- Bright **Street Lights for a well-lit community** with underground electricity.
- **Well-developed parks and an open-air gym.**
- Engaging Children's Play Area and tranquil Meditation Area.
- **Professionally designed, well-landscaped community.**
- **Rainwater Harvesting pits.**



Wellness

Experience wellness with an open-air gym, lush green parks, and landscaped footpaths for peaceful walks. The community features long, well-planned roads, connecting every corner with ease. Every detail is designed to promote a balanced, healthy lifestyle.



Education

An upcoming international school located right beside the community entrance, offering a safe, convenient, and well-planned educational experience. Imagine your children walking to school from home, with access to top-tier education and established sports grounds. This is everyday life at Hymarque's Jet County.



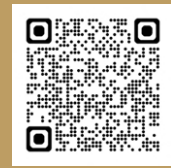
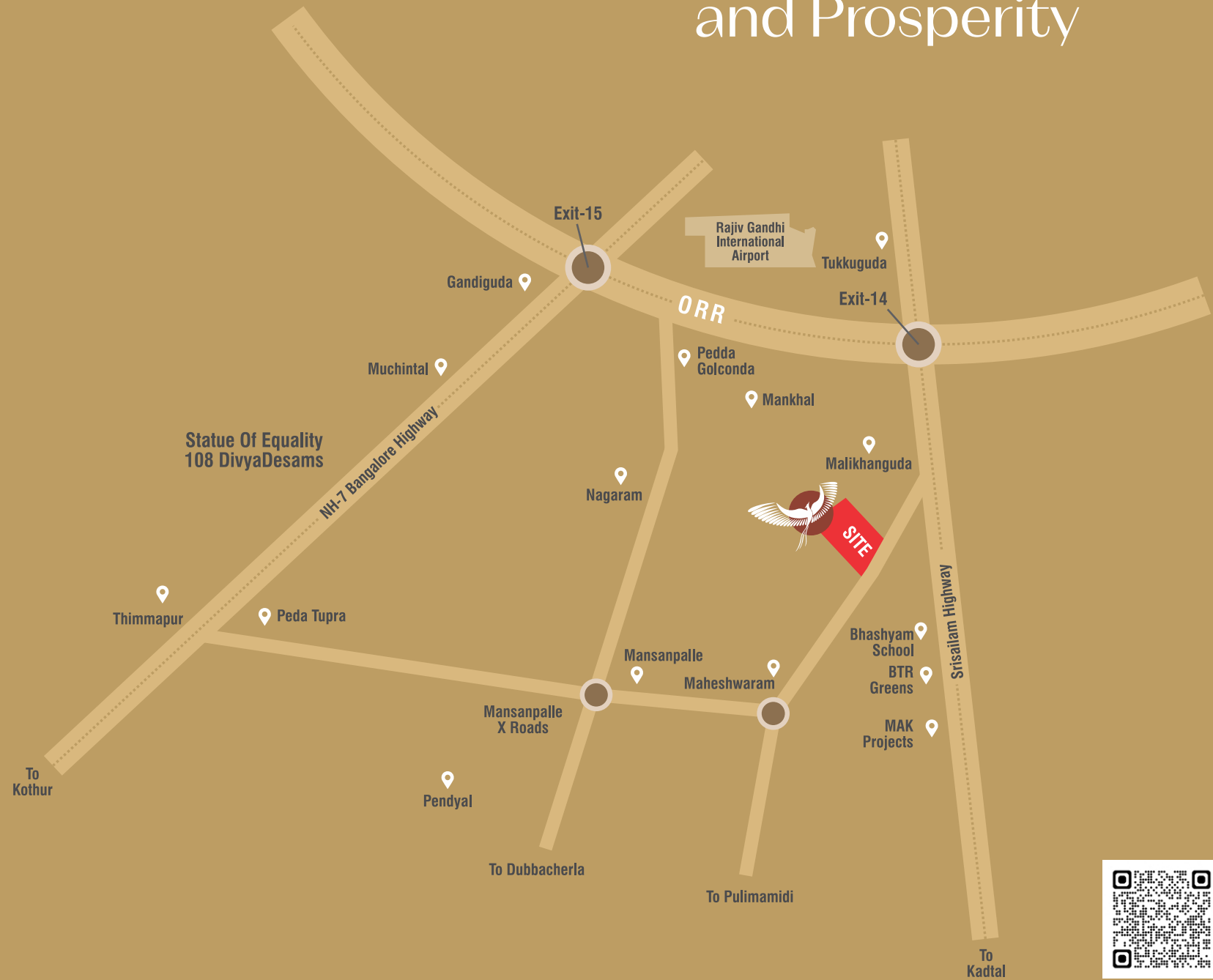
Park & Sporting field

Get active and take advantage of the many playing fields and designed sports venues right at your doorstep in Hymarque's Jet County. With wide-open spaces, there's no shortage of opportunities to stay fit, enjoy fun activities, or relax and unwind with your family.

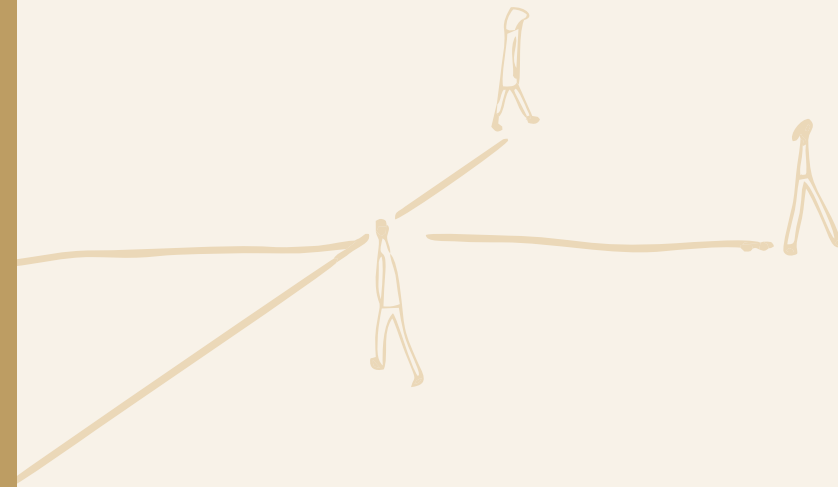


LOCATION PLAN
(not to scale)

Tukkuguda The Gateway to Growth and Prosperity



Location QR Code



WHY TUKKUGUDA?

Strategic Location: Situated near the Outer Ring Road (ORR), Tukkuguda offers seamless connectivity to major hubs like the airport, IT corridors, and industrial zones. **Growth Potential:** With rapid infrastructure development and growing employment opportunities, it is emerging as a preferred investment destination. **Affordable Pricing:** Compared to other areas in Hyderabad, Tukkuguda offers promising returns at competitive property rates.

Thriving Communities: The area is surrounded by upcoming residential projects, educational institutions, and healthcare facilities, ensuring holistic development.

Future Prospects: As a part of Hyderabad's expanding real estate market, Tukkuguda promises steady appreciation and long-term value.

NEARBY PROJECT

- Electronic City SEZ
- GMR Aerocity
- RGI International Airport
- Maheshwaram ITIR SEZ
- Regional Ring Road
- Outer Ring Road
- Wonderla
- Skill University
- Manchester Global School
- Statue of Equality (Sri Ramanuja Acharya Bronze Statue)
- Fab City SEZ
- HCL, TATA, Wipro SEZ Adibatla TCS, Indu
- Aga Khan International Academy
- World's Biggest Pharma City
- Future City



Hymarque
Constructions

WHERE VISION MEETS EXCELLENCE

Hymarque Developers is a well-known and highly respected builder and developer with a legacy spanning over two decades. Founded in Hyderabad, Hymarque is a private property development company with deep roots in construction and contracting. The company is driven by a vision to create a lasting legacy through architecturally inspired, balanced, and beautifully proportioned communities. Hymarque combines functionality with exceptional quality, delivering properties that stand the test of time and continue to enhance communities and urban landscapes.

Masood Bin Sayeed

Founder of Hymarque Constructions Pvt. Ltd.,

Masood Bin Sayeed began his career as a Class I Contractor, delivering key infrastructure projects. Over three decades, he has managed major roadworks, executed PWD and M.E.S contracts, and developed a 70-acre New Steel City. He has also created exceptional real estate layouts, including residential communities under the name Hydam Projects. His extensive experience spans across Maharashtra, Karnataka, and Andhra Pradesh. Today, he leads Hymarque Constructions with a strong commitment to building quality residential communities that are built to last.

Junaid Bin Masood

Junaid Bin Masood, son of Masood Bin Sayeed, carries forward a legacy built on trust, quality, and timely execution. With a master's degree in Business Management from the UK, he blends global insights with deep-rooted family values to shape the future of real estate. Inheriting his father's dedication to excellence, Junaid infuses fresh energy, strategic vision, and a keen sense of innovation, ensuring that every development reflects evolving lifestyles and modern aspirations. His leadership embraces both tradition and transformation, making thoughtful additions over time to craft future-ready residential communities that stand as benchmarks of progress and reliability.



Hymarque Constructions

6-2-27, 27/a & 28, Unit No 422, 4th Floor,
Downtown The Mall, Lakdikapul,
Hyderabad, Telangana 500004.

www.hymarque.com

RERA No.: P02400009215

Layout Permit No. 000069/LO/Plg/HMDA/2024

DESIGN CONSULTANTS

MD MAQSOOD



DESIGN affAIRs
dn_affair@yahoo.com



MARKETING PARTNER

ANUSHREE
INFRA
A Special Privileges
www.anushreeinfra.in